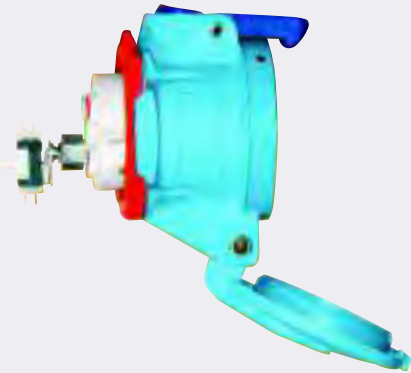


Auxiliary Switches



Female receptacles/connectors with up to 3 poles/4 wires are available with an optional auxiliary switch for operating secondary circuits on the line side of the circuit. The auxiliary switch is rated at 5A and includes one set of NO and one set of NC contacts. With the three phase devices the neutral contact of the plug operates the switch which is located in the neutral contact position in the receptacle. With the single phase units the third phase contact on the plug operates the switch which is located in the third phase contact position in the receptacle.

Auxiliary switches are available on:

DSN Series – DSN30 and DSN60 only

DS Series – All Sizes

DR Series – All Sizes

Examples:

Order a receptacle with an auxiliary switch by adding suffix **-270** to the receptacle part number

DSN30 Poly Receptacle 3P+E = 63-34043-**270**

If the receptacle is 3 pole/4 wire, the mating plug must be ordered as a 4 pole/5 plus the suffix **-NNF** should be added.

DSN30 Poly Inlet 3P+E = 63-38047-**NNF**

If the receptacle is 2 pole/4 wire (with neutral) the mating plug must be ordered as a 4 pole/5 wire and the suffix **-3NF** must be added.

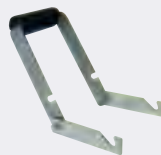
DSN30 Poly Inlet 2P+N+E =63-38076-**3NF**

Drawbar Mechanisms

Larger plugs and receptacles typically require more force to engage the plug into the receptacles. For this reason, Meltric offers two styles of drawbar mechanisms to simplify the mating of these devices.

Removable Drawbar

A removable drawbar is the most economical choice because it may be shared between devices as long as each device is equipped with drawplates on the inlet and receptacle.



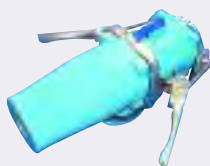
A complete kit consists of 1 removable drawbar handle and 2 draw plates, one for the inlet and one for the receptacle.

Removable Drawbar

Product	Complete Kit	1 Drawbar	1 Plate
DS100	NT100	NT110	NT120
DS200	NT200	NT210	NT220
DR150	NT100	NT110	NT120
DR250	NT200	NT210	NT220
DN20	NT100	NT110	NT120

Permanent Drawbar

A permanently attached drawbar is the more robust choice.



A complete kit consists of 1 drawbar with attached plate plus one additional plate.

Permanently Attached Drawbar

Product	Complete Kit	1 Drawbar/1 Attached Plate	1 Plate
DS100	39-9A486	39-9A024-486	39-9A014-486
DS200	39-2A486	39-2A024-486	39-2A014-486
DR150	39-9A486	39-9A024-486	39-9A014-486
DR250	39-2A486	39-2A024-486	39-2A014-486
DN20	39-9A486	39-9A024-486	39-9A014-486